

Welcome to Imperial

Mr Alex Page, Senior International Relations Officer (Asia)
International Relations Office, Imperial College London

A nighttime photograph of a city skyline. The central focus is a tall, ornate tower with a golden dome, which is brightly illuminated with blue light. The tower's facade is detailed with classical architectural elements. To the left, a modern building with a grid of windows is visible. In the foreground, a large, modern building with a glass facade is partially visible. The background shows a dense urban landscape with various buildings and lights under a dark blue sky. The overall scene is a vibrant representation of a modern city at night.

Our Mission Statement

Imperial College London's mission is to achieve enduring excellence in research and education in science, engineering, medicine and business for the benefit of society.

4 Faculties

Business
Engineering
Medicine
Natural Sciences

Total Income: £1.03bn

Student fees £296m

Research contracts £364m

Fundraising £64m



Prof Alice Gast, President

17,000 Students

8,000 Staff (1300 Academics)

14 Nobel laureates

3 Field Medallists

International community

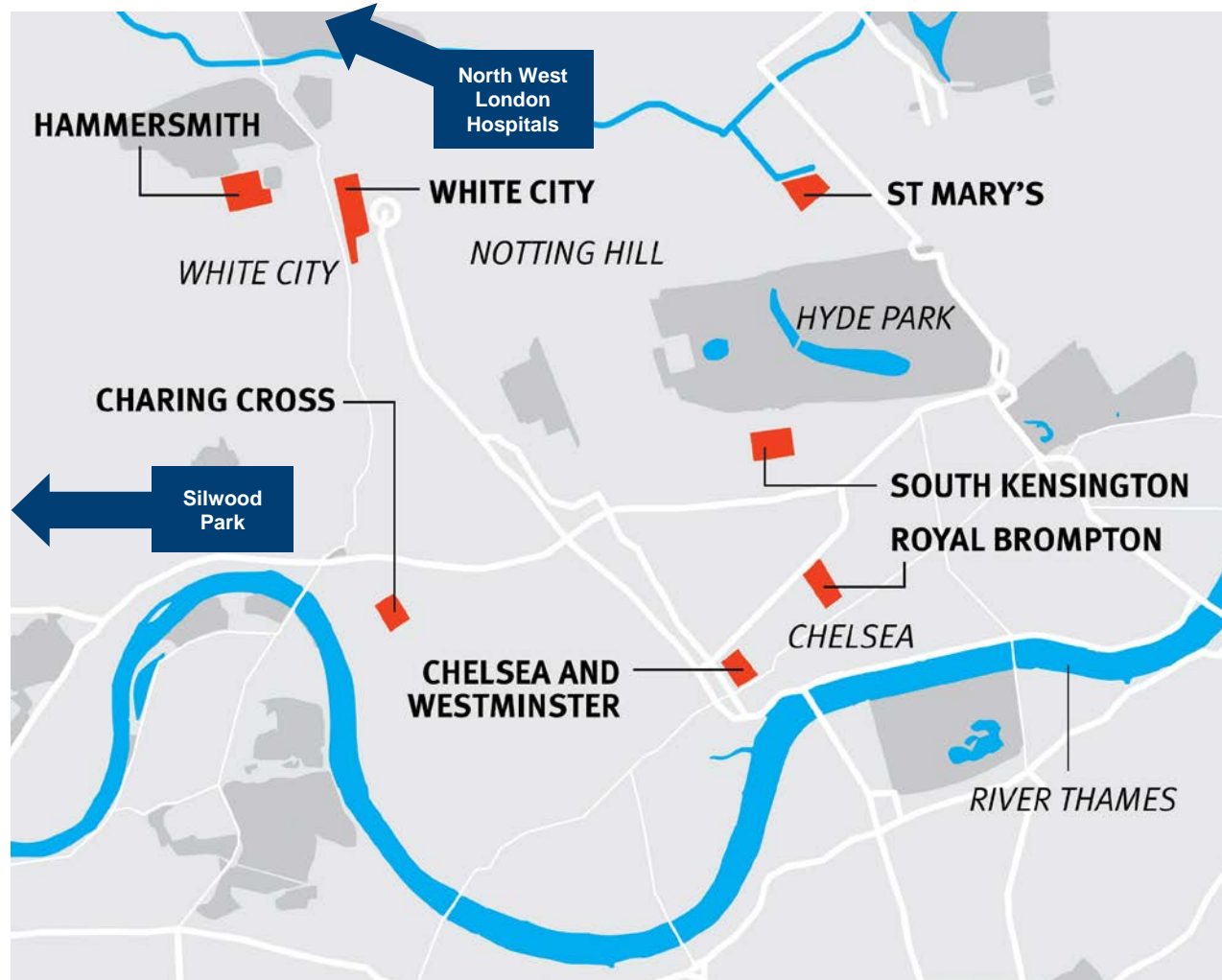


Prof Ian Walmsley, Provost

World-class scholarship, education & research in science,
technology, engineering, medicine & business

Imperial College London

Imperial Today



9 campuses:

- **South Kensington**
- **White City**
- Charing Cross
- Chelsea & Westminster
- Hammersmith
- Royal Brompton
- South Kensington
- St Mary's
- North West London Hospitals Campus
- Silwood Park

Our Standing



- **Times Higher Education World University Rankings 2019: 9th**
- **Times Higher Education World's Most International Universities 2018: 2nd** in the UK, **9th** in the world
- **QS World University Rankings 2019: 8th**
- **Reuters Europe's Most innovative universities 2018: 2nd.**
- **Teaching Excellence Framework (TEF): Gold:** consistently outstanding teaching, learning and outcomes for its students; of the highest quality found in the UK
- **Research Excellence Framework (REF): 1st** for high impact research of any UK university
- **The Guardian University Guide 2018: 1st** for Career Prospects



Foster Multidisciplinary Research

Global Challenge Institutes



Climate Change



Global Health Innovation



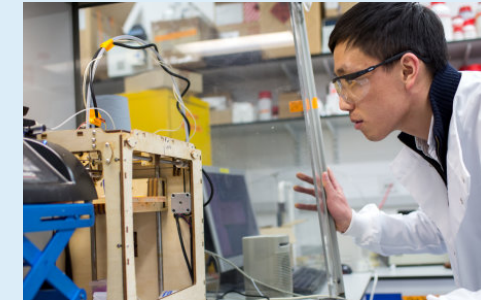
Energy Futures



**Security Science and
Technology**



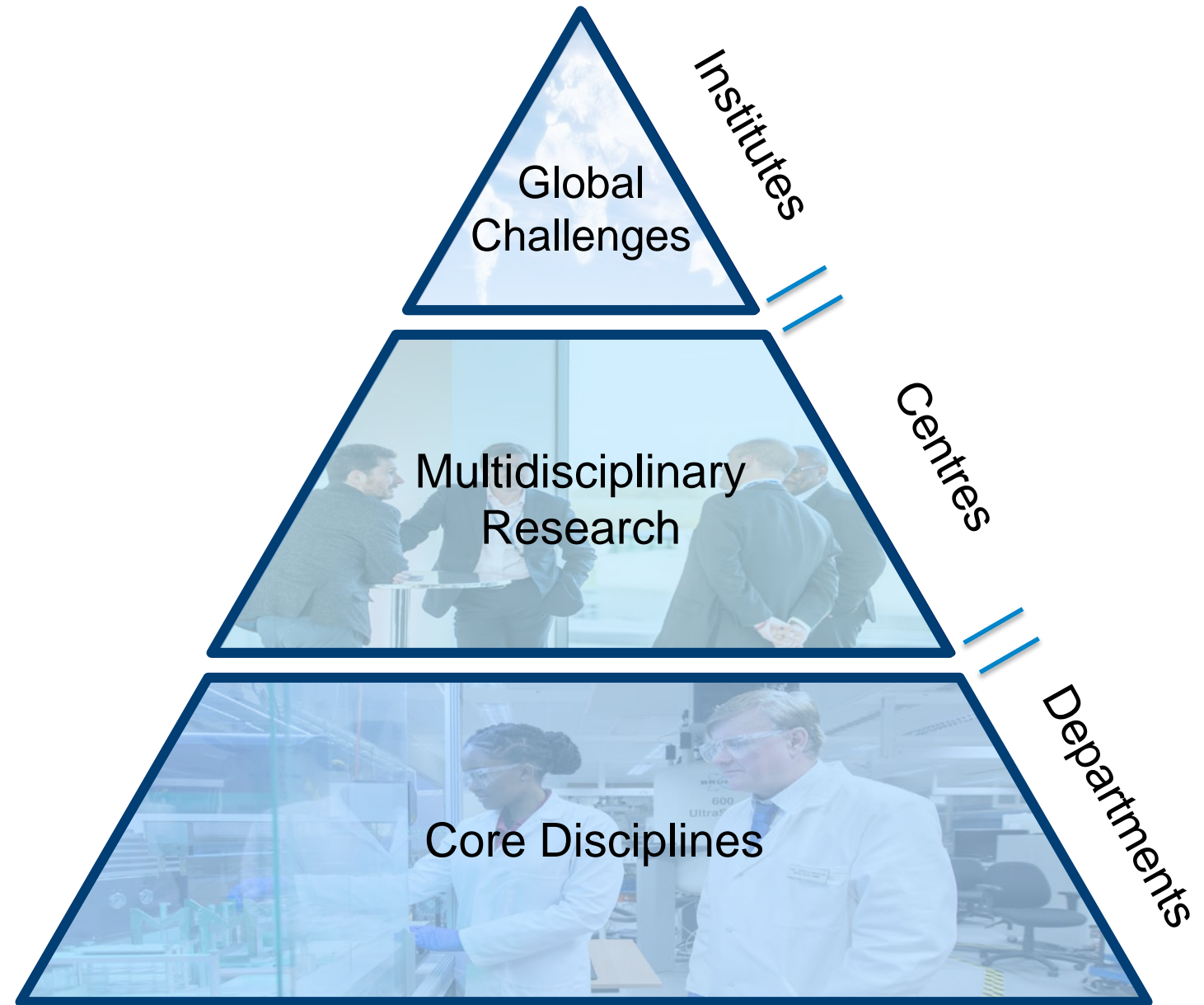
Data Science



**Molecular Science
and Engineering**

Structure

- Three Faculties and a Business School :
 - Natural Sciences
 - Engineering
 - Medicine
 - Business School
- Centres and Institutes





Foster Multidisciplinary Research: Networks of Excellence



The Imperial Centres of Excellence galvanise a critical mass of researchers, transcending Faculty boundaries to support a multidisciplinary theme.

These Networks establish and grow connections around an emerging multidisciplinary area.

Imperial Networks of Excellence

Agri Futures Lab

Air Quality

Antimicrobial Resistance

Artificial Intelligence

Cancer Technology

Diabetes

Financial Technology 'FinTech'

Frontiers of Ultrafast Measurement

Glycobiology

Human Behaviour and Experience in STEM

Industrial Biotechnology

Innovative Imaging Across Scales

Malaria

Marine and coastal environments

Microbiome @ Imperial

Neuromuscular Rehabilitation Technology

Ocean Plastic Solutions

Physics of Life

Robotics Forum

Space Lab

Stem Cell and Regenerative Medicine

Sustainability through Life Cycle Approaches

Trauma Bioengineering

Vaccine Research

Vascular Science

Wound Healing and Regeneration

Imperial College
London



Key Partnerships



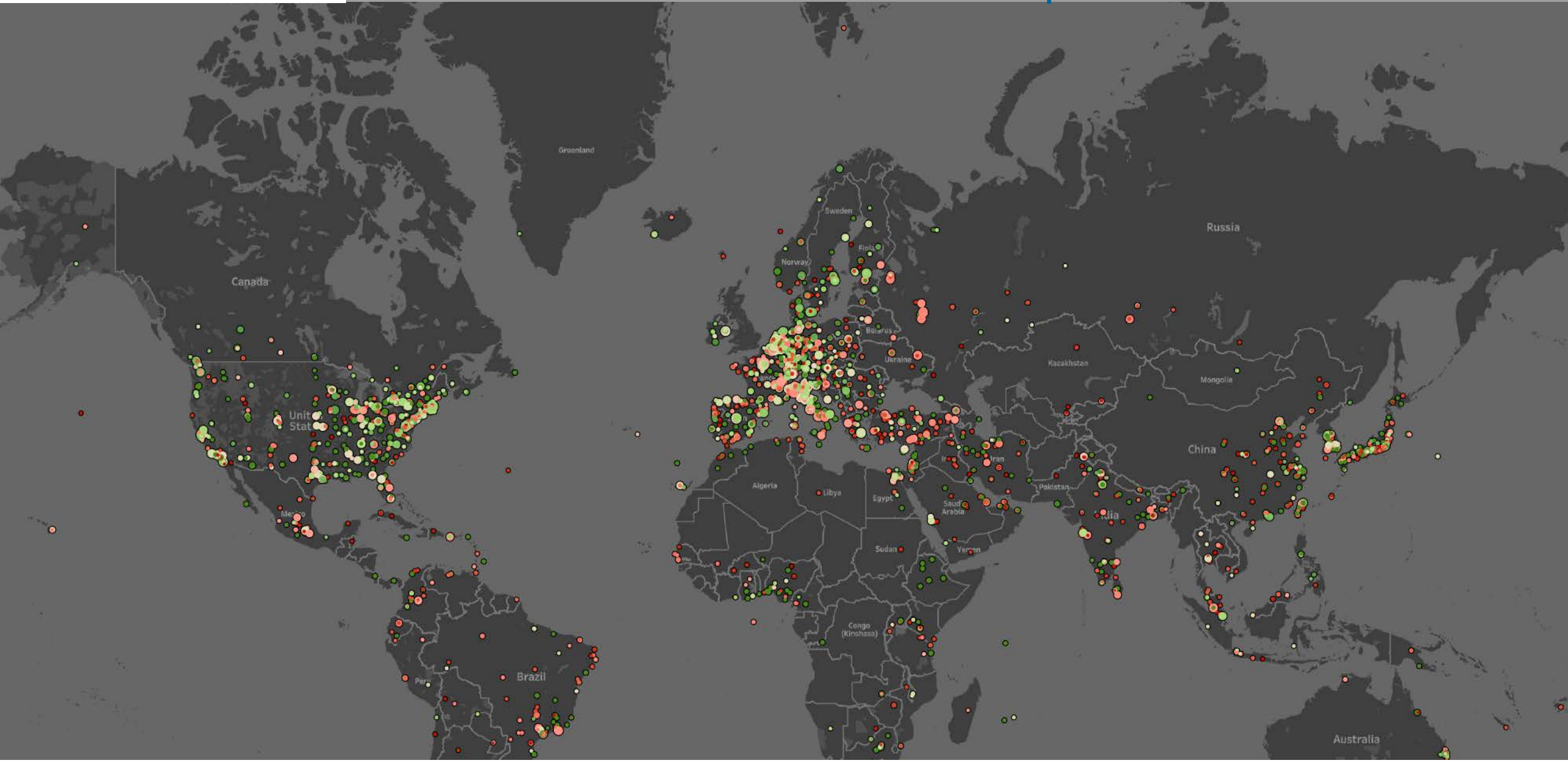
The
Alan Turing
Institute



HENRY
ROYCE
INSTITUTE



Develop Effective Partnerships: International Co-authorship



Imperial College
London

Key International Partnerships



Massachusetts
Institute of
Technology



Tsinghua University



Imperial College
London



Imperial and Vietnam

Imperial's Future Vaccine Manufacturing Hub partners with **VaBiotech** (Hanoi)

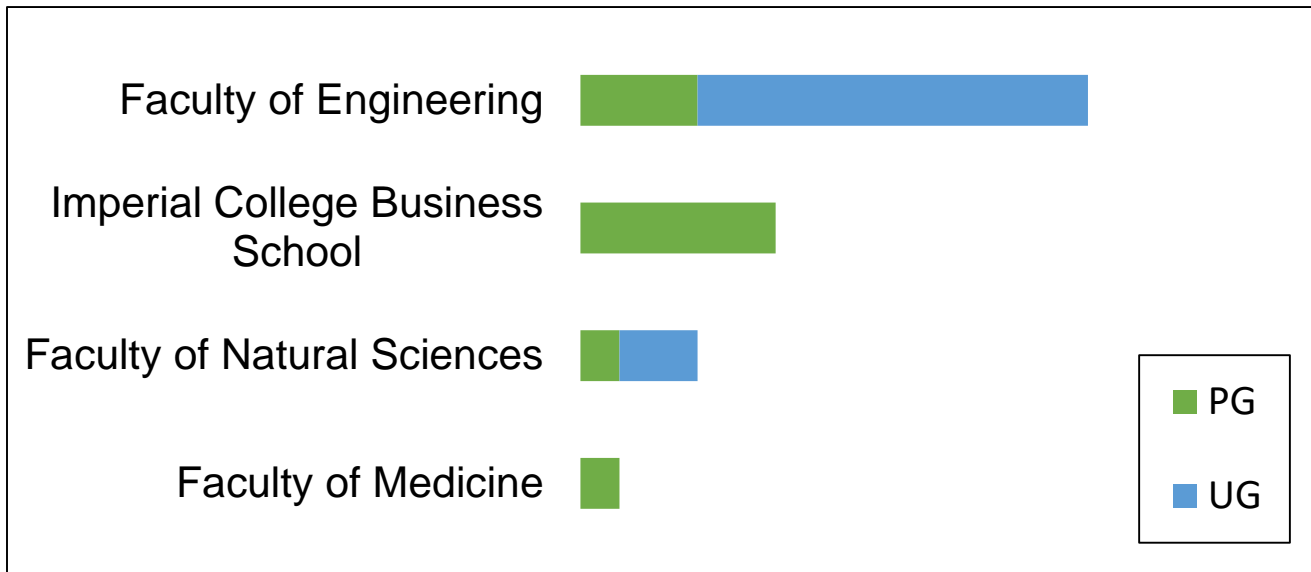
Imperial's Global Health and Development Group: working with policy makers and hospital staff in Vietnam on antibiotics and pneumonia.

Imperial College Business School: MBA students visited Vietnam as part of a Global Experience Week

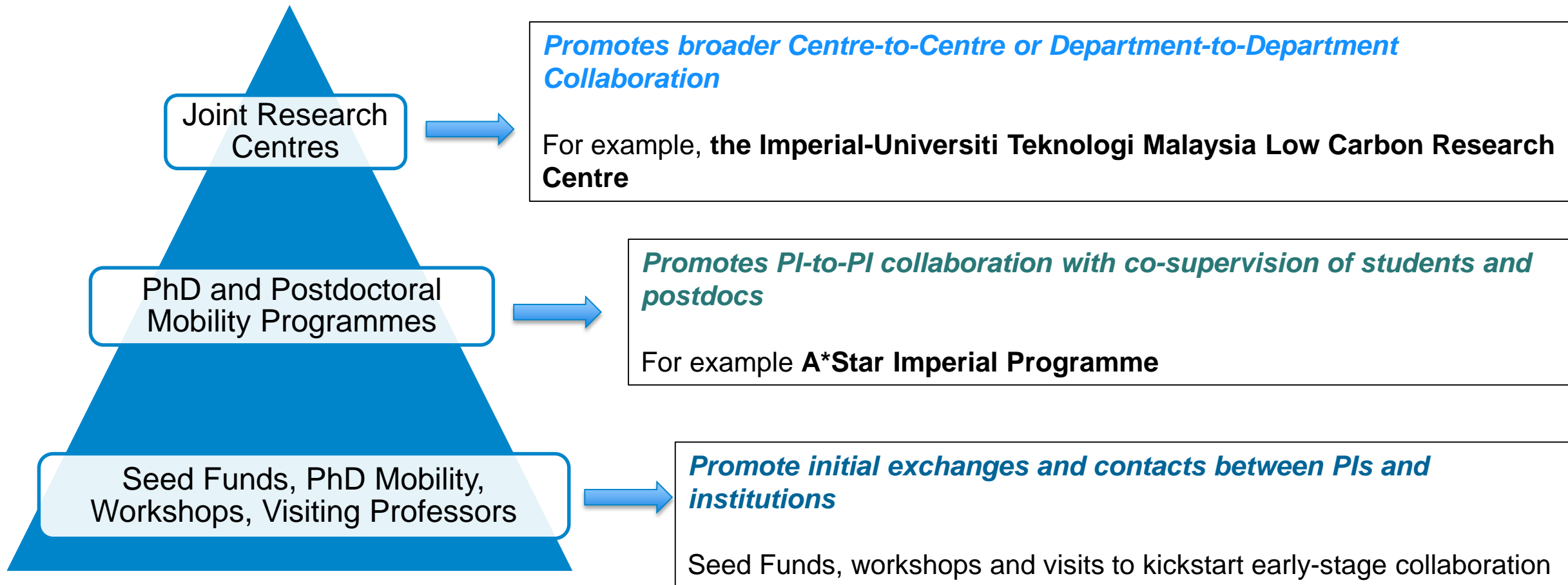
Imperial College Business School: researched the cost of climate change for Vietnam

There are currently **22** Vietnamese students enrolled at the College

The majority of Vietnamese students are in the Faculty of Engineering



Models of International Collaboration



Enterprise and the Entrepreneurial Ecosystem

The White City Innovation District

*Incubator, Accelerators, Advanced hackspace and
development programmes*

For: UK Vietnam Higher Education Network & British Council

Presenting on behalf of Simon Hepworth, Director, Enterprise

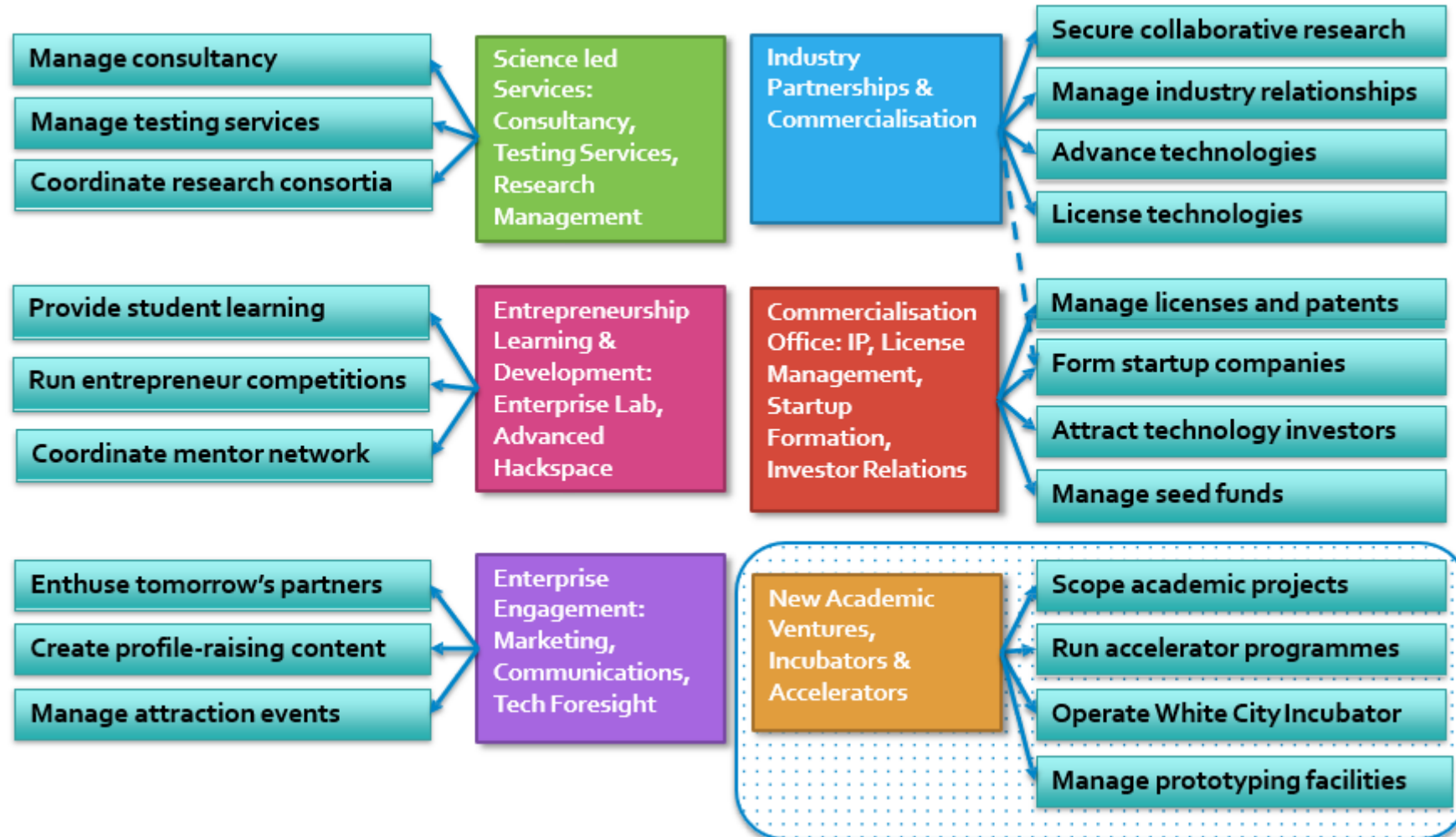
Mr Charles Mallo. Director Academic and Technology Ventures Enterprise, Imperial College

5 November 2019

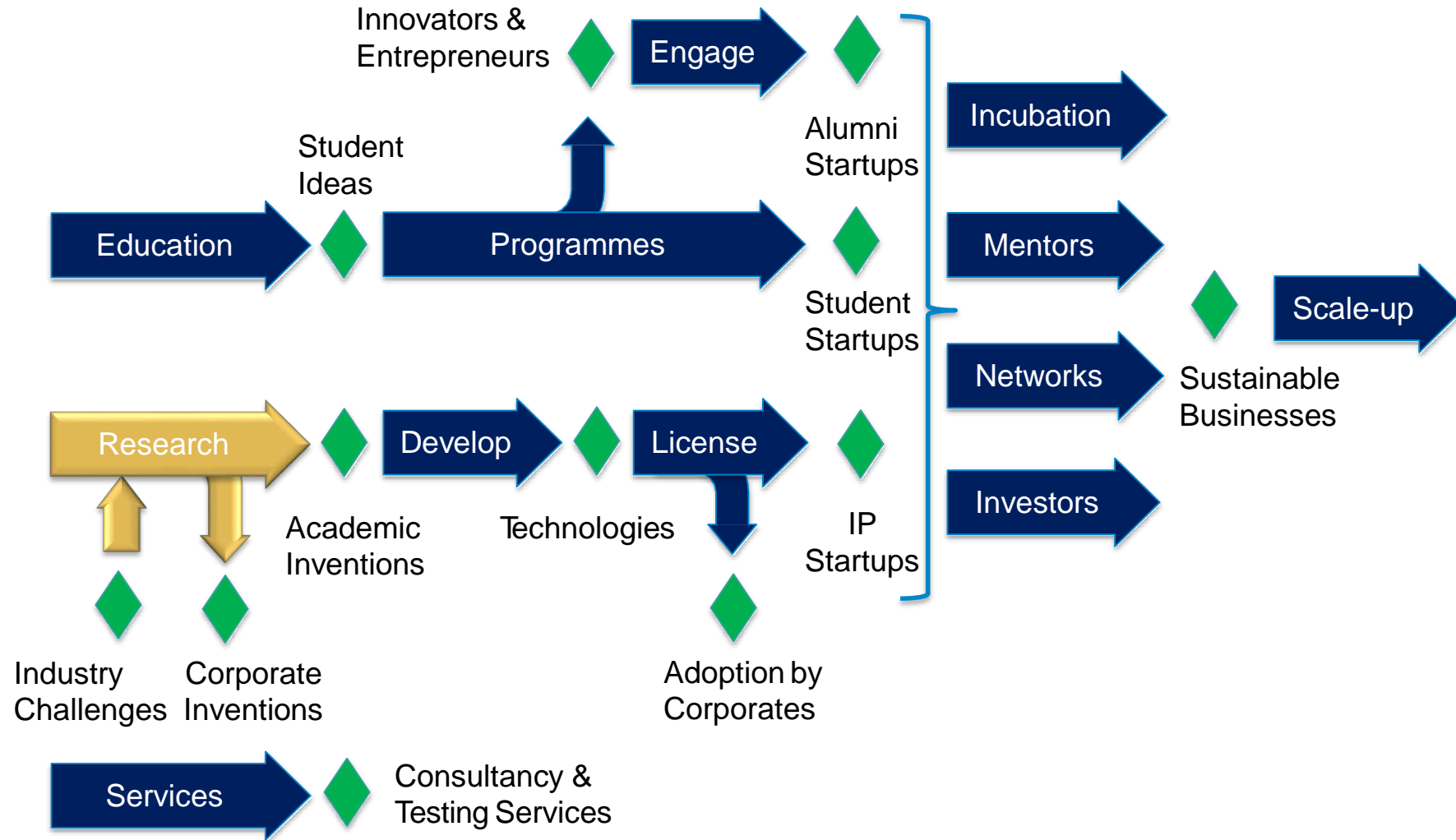
Imperial College London



Enterprise Organisation



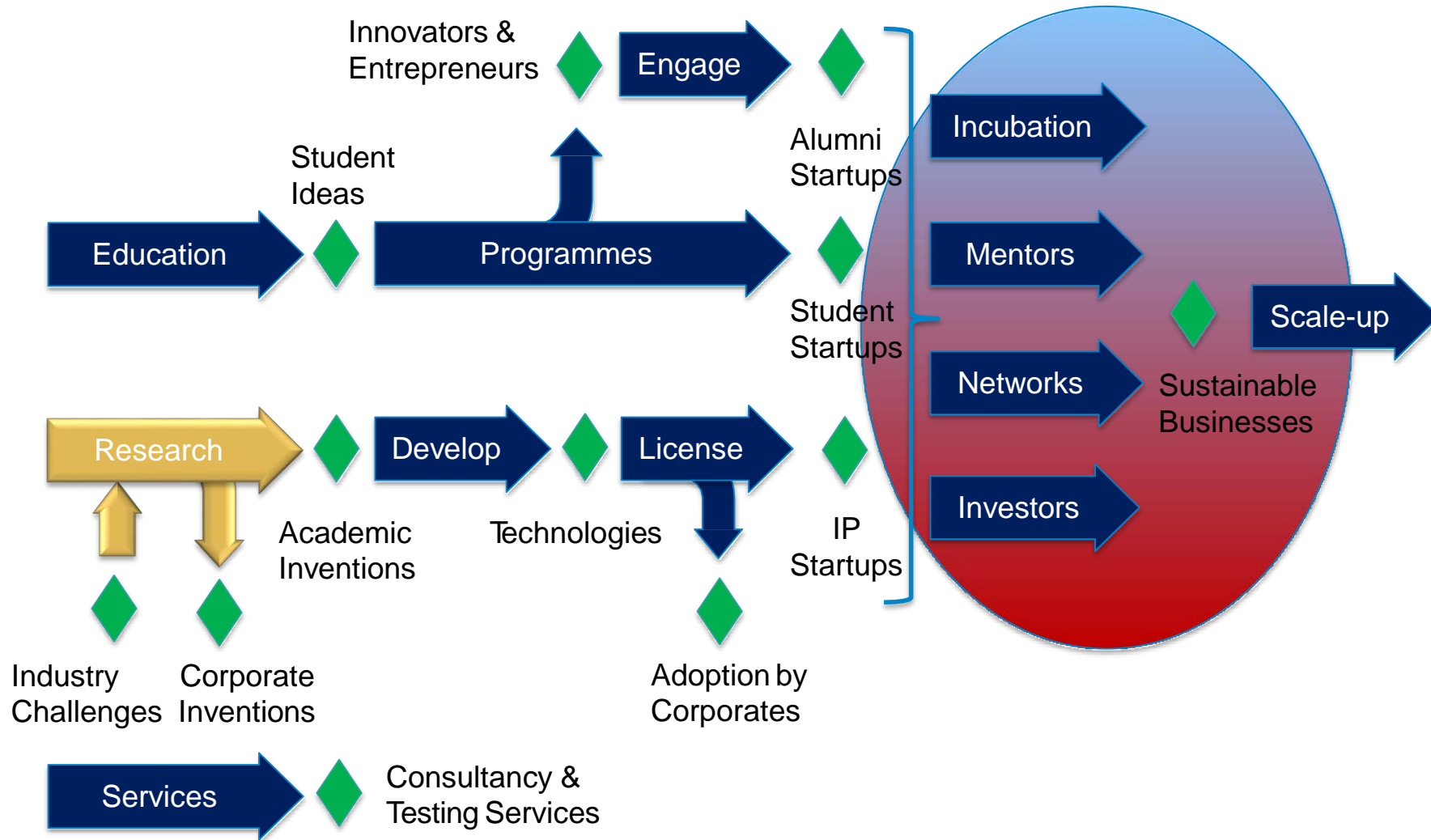
Entrepreneurial Ecosystem



Building the Ecosystem



Entrepreneurial skills development



White City Incubator

A hub for innovation and entrepreneurship

- Incubator at I-HUB provides office and lab space for early-stage companies
- Currently houses 16 companies across office, lab, coworking and shared lab space

Incubation support and training

- Shared labs model
- Management support services
- Industry focussed network events and workshops





MedTech
SuperConnector™

Now Accepting Applications for our Challenge Accelerator:

Mental Health, Wellbeing & Happiness

- Four programmes over 3 years alternating between technology and challenge led accelerators .
- MTSC provides Early Career Researchers with the funding, training, mentorship and access to industry partners to help fast track the translation of their research discoveries.
- Programme outputs and lessons learnt are shared by each institution's technology transfer office to create an evidence base for best practice in knowledge exchange and medtech translation.

The MedTech SuperConnector is a Research England, CCF funded open experiment in medtech acceleration, combining: Research from 8x academic institutions and their TT offices, 3x science business incubators, industry expertise, NHS patients, and other enabling partners

<http://medtechsuperconnector.com/>





Techcelerate helps early career researchers hone their entrepreneurial skills and explore the commercial potential of their discoveries, ideas and inventions.

The three-month programme gives researchers support to leave their labs and meet potential partners and customers. This enables them to refine their ideas to better meet the needs of the realworld.

Participants also benefit from entrepreneurship training as well as access to expert business advisors, coaches and entrepreneurial role models.

Imperial
Techcelerate
Programme

Imperial's flagship Postdoc entrepreneurship programme

Advanced Hackspace

Supported by team of practicing experts

- Exploits advanced skills of a university to create citizen-driven cross-faculty idea prototyping space
- **Prototyping capabilities across 6 spaces:** metal work to bio-hacking to 3D printing to electronics
- **Free access and training to college members**

A community of innovative makers

- **> 3000 members** of college
- Maker events including hackathons, competitions, classes and other events
- Booster grants / mentoring to members for prototyping projects



Innovators Programme

- Open to Imperial College staff, researchers, post-graduate students, alumni and entrepreneurs in the local area.
- Provides funding, access to the Imperial College London ecosystem, one-on-one mentoring, free space to work and training in areas such as pitch practice, business planning, customer validation, IP, fundraising and growth.
- Participants can share in prizes of over £10,000 worth of cash and in-kind support



Other Programmes & Competitions



IDE
INNOVATION
DESIGN
ENGINEERING



Imperial Business Pitch Final 2017

Come along to see the best student start-up teams from across Imperial College Business School pitch for the chance to win £10,000!

Wednesday 11th October 2017 6-9pm
Sign up via Eventbrite



Imperial College
London
White City Incubator


INNOVATORS' PROGRAMME

- FOUR WEEKS OF WORKSHOPS AND NETWORKING
- DEDICATED MENTORS
- £10K WORTH OF PRIZES

DELIVERED IN ASSOCIATION WITH



IMPERIALINCUBATOR.COM/INNOVATORSPROGRAMME

The banner features a warm-toned photograph of three smiling women. The woman on the left is looking towards the camera, while the other two are slightly behind her. A navigation bar at the top right includes links for Home, What's on, Programmes, How we can help, About us, and Contact. The Imperial Enterprise Lab logo is in the top left. The main headline 'Accelerating female-led startups' is prominently displayed in the center. Below it, a paragraph describes the program as Imperial's flagship female entrepreneurship education, aimed at supporting the next generation of women entrepreneurs. An 'Apply now' button is located at the bottom left. In the bottom right, a brochure titled 'WE INNOVATE @IMPERIAL' is shown, featuring photos of participants. The URL 'https://www.imperialenterpriselab.com/' is at the bottom left.

Imperial Enterprise Lab

Home What's on Programmes How we can help About us Contact

Accelerating female-led startups

WE Innovate is Imperial's flagship female entrepreneurship education programme designed to support the next generation of women entrepreneurs to accelerate their startups. The six-month programme supports female students, developing an early stage business idea, to advance their leadership and entrepreneurial skills.

[Apply now](#)

<https://www.imperialenterpriselab.com/>

WE INNOVATE @IMPERIAL

WE Innovate Final: 6.20pm – 9.30pm, Thursday 7th March, LT200, City & Guilds

Enterprise Division

Dr Simon Hepworth
Director of Enterprise
s.hepworth@imperial.ac.uk
07872850066
Room 3:12 Faculty Building
South Kensington

Enterprise Ventures

Mr Charles Mallo
Director ATV
c.mallo@imperial.ac.uk
07912122575
Room 3:13 Faculty Building
South Kensington

White City Ecosystem

Ms Vicky Kilcoyne
Assoc. Director ATV
v.kilcoyne@imperial.ac.uk
07974 767291
Room 3:14 Faculty Building
South Kensington

Techcelerate

Dr Callum Lawrence
Innovation & Acceleration
Manager
c.mallo@imperial.ac.uk
07716311611
3rd floor Fac. Building SK &
4th Floor, I-Hub, White City
campus

Incubator and Hackspace

Mr Graham Hewson
Head of Incubation
g.hewson@imperial.ac.uk
+44 20 8811 6730
3rd floor Fac. Building SK &
Mezzanine Floor, I-Hub,
White City campus

MTSC

Mr Hiten Thakrar
MTSC Programme manager
h.thakrar@imperial.ac.uk
07517 551 804
3rd floor Fac. Building SK &
4th Floor, I-Hub, White City
campus

Thank you

Centre for Doctoral Training in Chemical Biology: Innovation & Entrepreneurship



Dr Rudiger Woscholski

Education in partnership with industry

- Train next generation of scientists and entrepreneurs
- Understanding of product development and design
- Skilled in early stage commercialisation and industry 4.0



Research & Translation

- Multidisciplinary approach
- End-user driven translation of research
- Chemical Biology focus: Physical sciences tools and technologies to address life sciences challenges



Industry partners:

AstraZeneca



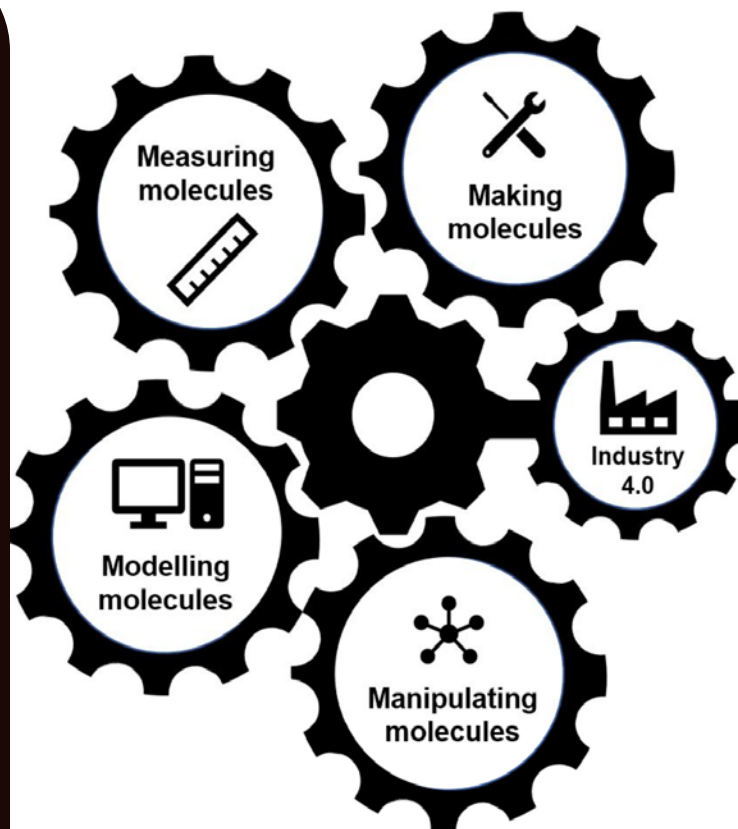
HEPTARES
therapeutics

syngenta

Oxford
NANOPORE
Technologies

Agilent Technologies

NPL
National Physical Laboratory



Industry 4.0 platforms:

Automation

AI

Additive manufacturing

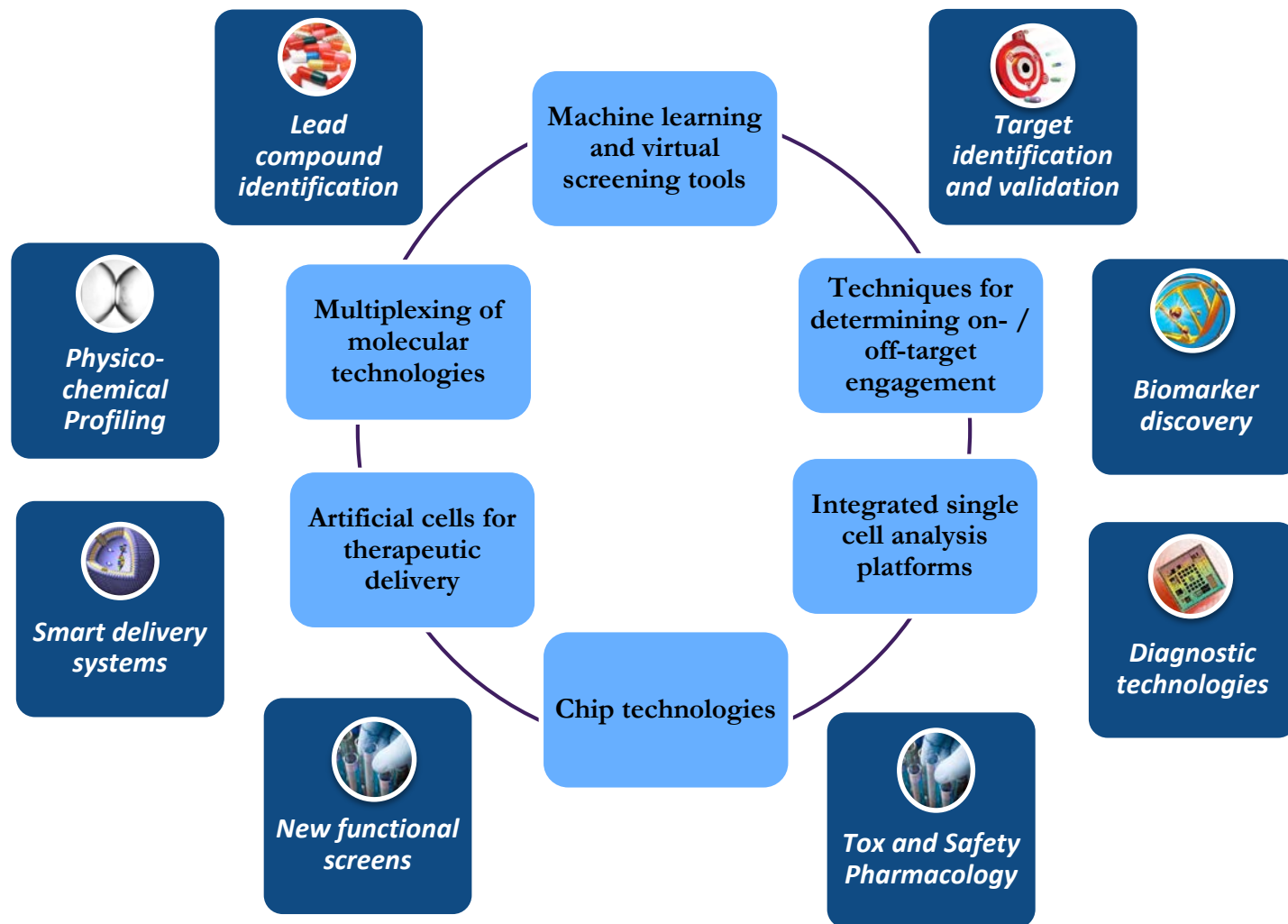
Big data analytics

Data visualisation

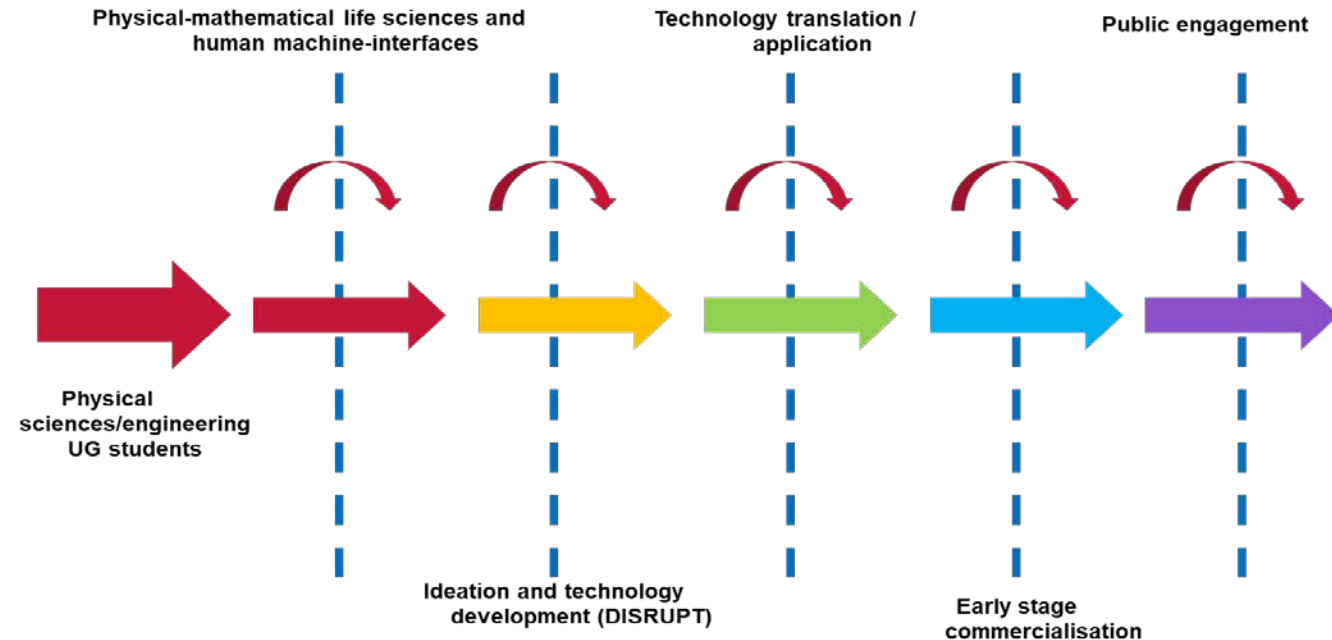
Image informatics

High-throughput tech

- ✓ Develop and translate new molecular tools and technologies
- ✓ Spearhead new generation of disruptive prototyping tech
- ✓ Dovetails these breakthroughs with industry 4.0 platforms



**Undertake blue skies and
translational research**



- Students will be armed with an in-depth understanding of product development pipelines across a variety of sectors, acquired through first-hand experience of multi-disciplinary translational research and early stage commercialisation.
- Enable them to become leaders of technology innovation and translation in pharma, embracing the industrialisation of life sciences

MRes

EDI /Unconscious
Bias Training/ RRI



Structured lecture
programme



NPL (Data
Science Course)



HackEDU /
ICAH Membership



Industry Innovation
Workshops / micro-
MBA



Research Project



Group Learning
Seminars



Code Club



PhD

Industry-SME
Hackathons



Science Communication Training
With the BBC



International Science Policy



Human Transformation
Studies



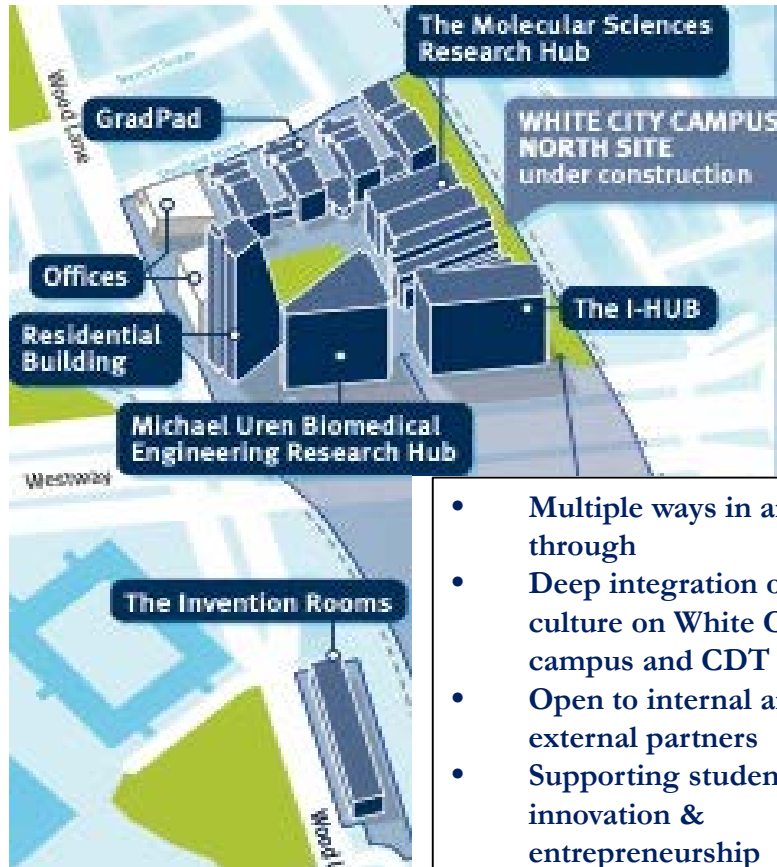
EVOLVE
Programme



DISRUPT Tech
Accelerator



White city campus: Co-location of Entrepreneurship, Industry, Academia and Local Community



- Multiple ways in and through
- Deep integration of this culture on White City campus and CDT
- Open to internal and external partners
- Supporting student-led innovation & entrepreneurship

Ideation

*Business
development*

Prototyping

Spin-out

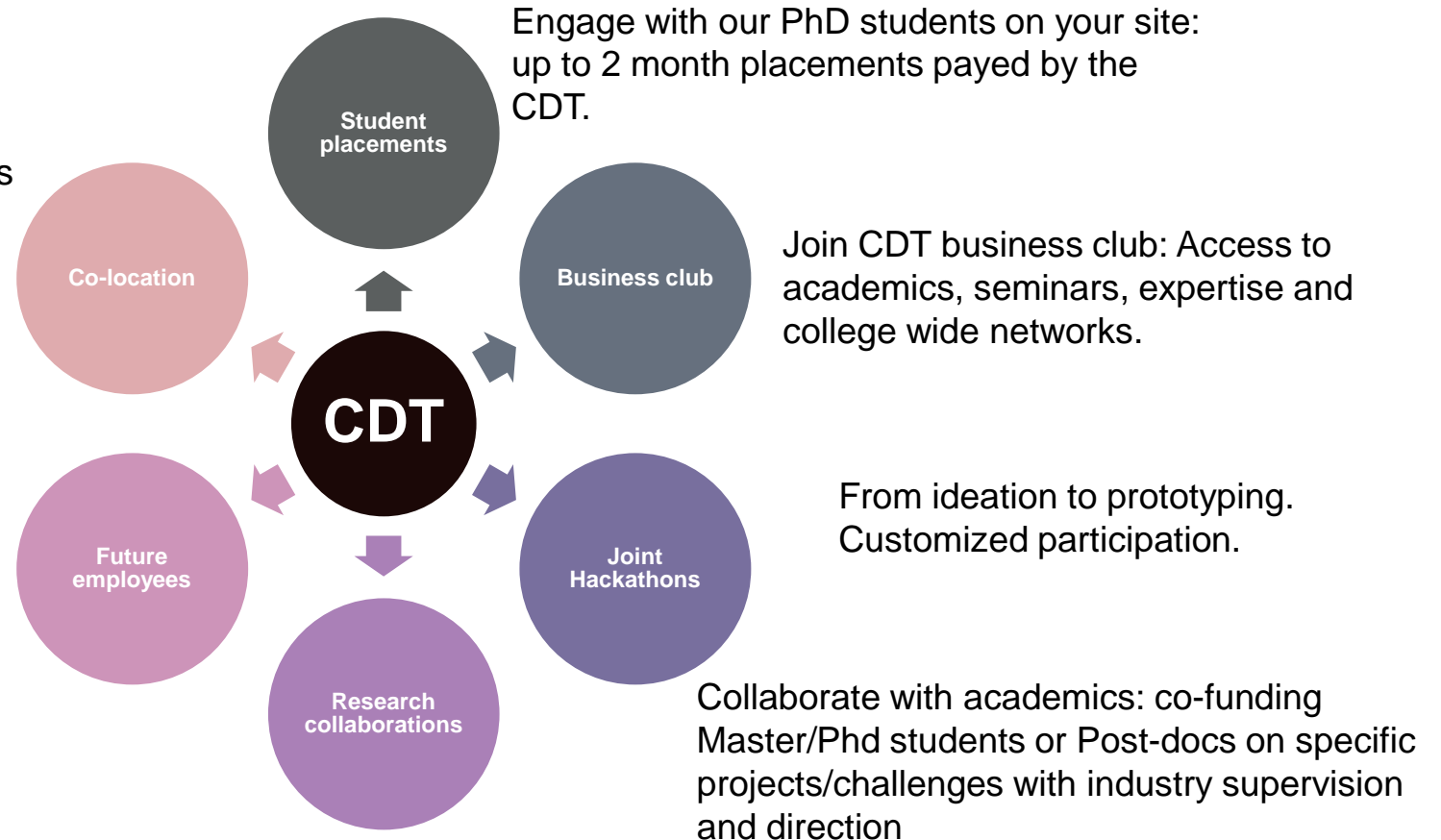


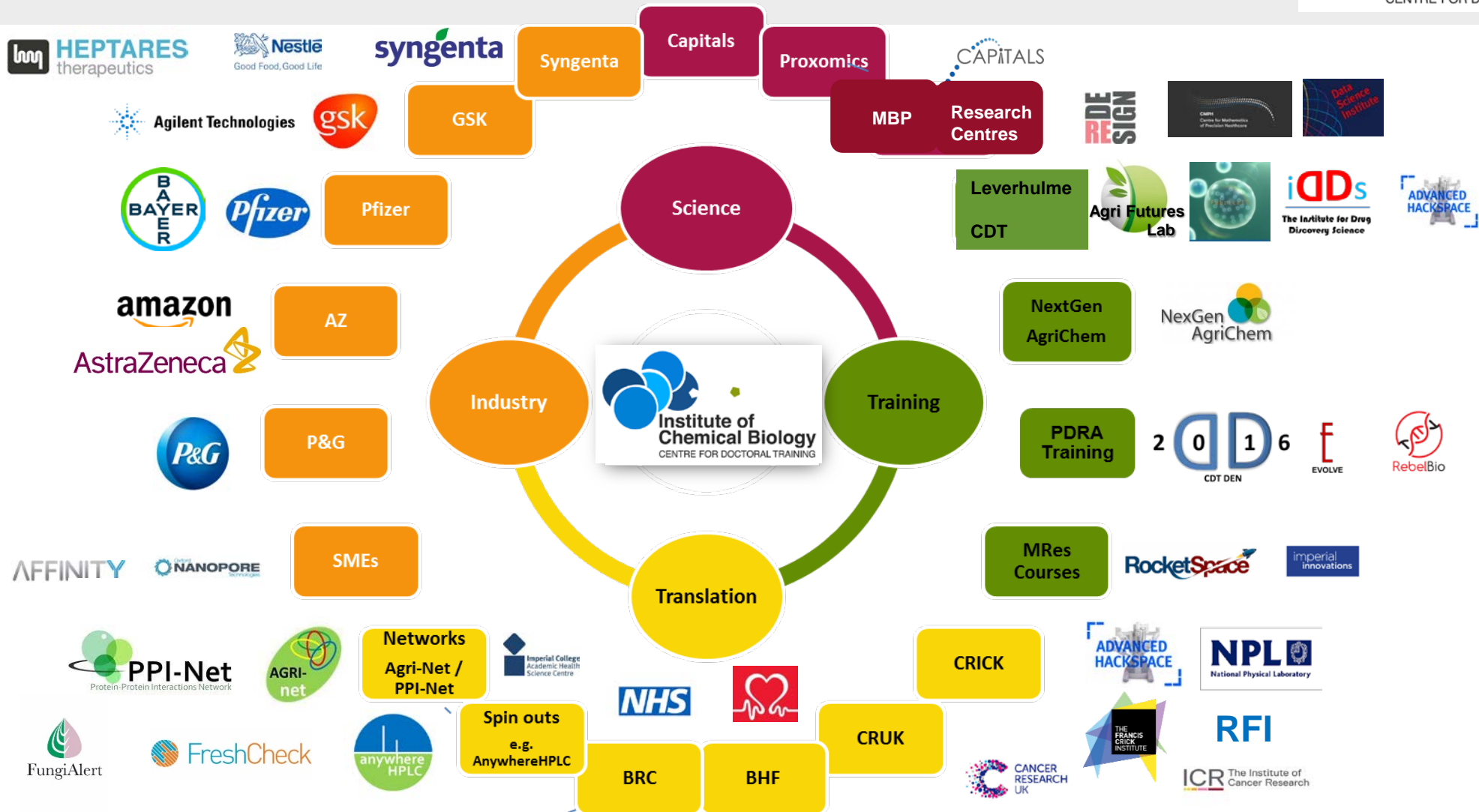
Imperial
Enterprise Lab



Advantages of White city ecosystem:
Share space with academia, easy access
to students, postdocs, academics and
state of the art facilities.

Recruit students: Multidisciplinary PhD
graduates with physical sciences
education and a good understanding of
biomed sciences and sector.
Skilled in industry 4.0.





Contact:



Prof Oscar Ces;
CDT Director
o.ces@imperial.ac.uk



Dr Rudiger Woscholski;
CDT Deputy Director
r.woscholski@imperial.ac.uk



Dr Laura Barter;
CDT Deputy Director
l.barter@imperial.ac.uk



Dr Natalia Goehring;
Project Manager of ICB-CDT
n.goehring@imperial.ac.uk
+44 20 7594 9098