



International Science  
Partnerships Fund

# Early Career Fellowships

Information Session  
5 June 2024

Delivered by  
University of  
**Kent**



# International Science Partnerships Fund (ISPF)

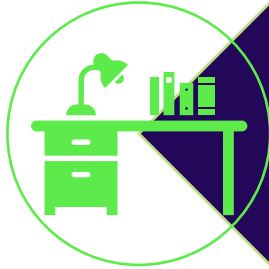
*Research and  
innovation at the heart  
of our international  
relationships*



The British Council builds connections, understanding and trust between people in the UK and other countries through arts and culture, education and the English language.



# Our programmes under International Science Partnerships Fund (ISPF)



## Direct Research and Innovation support

- Supporting UK researchers and innovators to work with peers around the world on the major themes of our time. Up to £200K grants for 2 year research projects.



## Research capacity strengthening

- Funding bilateral/multilateral partnerships promoting knowledge exchange and access to new research environments to enhance the quality of UK and partner countries' research and innovation environments. Fellowships, training programme and knowledge sharing workshops co-designed with international partners



## Equality, Diversity and Inclusion

- Enabling international collaboration and gaining access to new research environments, facilities, knowledge and expertise, creating lasting for both countries

University of Kent

---

# About university and criteria to apply for the fellowships

ISPF Early Career Fellowships

University of Kent

**Research Area 1-2 (Analytics)  
Flood Resilience and  
Sustainable transport**

ISPF Early Career Fellowships

University of Kent

**Research Area 3  
(Biosciences)  
Crop resilience**

ISPF Early Career Fellowships

---

# Experience sharing

ISPF Early Career Fellowships



---

## Q&As

- Do I have to contact with supervisor when I apply?
- If I become one of holders of fellowship, can I participate in both analytics-related fields to learn more because my research orientation is the application of artificial intelligence in logistics?
- Can I apply for this program if I got the PhD degree in 2017?
- Prof. Paola, can you please give me more information about the project timeline. I will graduate in 2024, so can I apply this program?

# Contact us



[UK-ISPF@britishcouncil.org](mailto:UK-ISPF@britishcouncil.org)



[@HEGoingGlobal](https://twitter.com/HEGoingGlobal)



<https://www.facebook.com/britishcouncil>



<https://www.linkedin.com/company/british-council>



Feedback form Information  
Session for Applicants in ISPF Early  
Career Fellowships scheme



Scan for more  
information





International Science  
Partnerships Fund

# Early Career Fellowships

Information Session  
5 June 2024

Delivered by  
University of  
**Kent**

